



FITTINGS FOR COMMERCIAL VEHICLES



DIVIDERS SERIES



DIVIDERS
E4 365 050
page 4



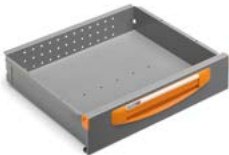
DIVIDERS
E5 365 050
page 16



DIVIDERS
E4 365 071
page 6



DIVIDERS
E5 365 071
page 18



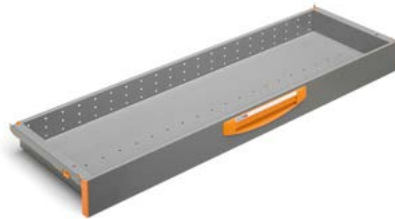
DIVIDERS
E4 445 050
page 8



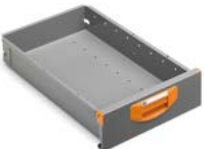
DIVIDERS
E5 365 101
page 20



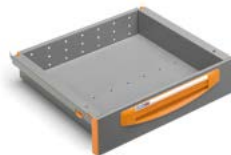
DIVIDERS
E4 445 071
page 10



DIVIDERS
E5 365 122
page 22



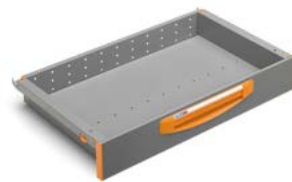
DIVIDERS
E4 508 036
page 12



DIVIDERS
E5 445 050
page 24



DIVIDERS
E4 508 044
page 14



DIVIDERS
E5 445 071
page 26



DIVIDERS
E5 445 101
page 28



DIVIDERS
E5 445 122
page 30



DIVIDERS

E8 091 042

page 32



DIVIDERS

E8 091 058

page 34



DIVIDERS

E8 093 042

page 36



DIVIDERS

E8 093 058

page 38



DIVIDERS

E8 108 042

page 40



DIVIDERS

E8 108 058

page 41





DIVIDERS

E4 365 050

Dividers for drawers series S4 suitable for modules with width 508 mm and depth 365 mm
 Drawer load capacity: 40 Kg
 Available heights: 100 - 150 mm



EXAMPLE E4 365050 A0 for heights: 100 - 150 mm

Partition example for steel drawer F 22 S4 365050:
 1 rubber "mat" S4/S5



EXAMPLE E4 365050 B1 for heights: 100 mm

EXAMPLE E4 365050 B3 for heights: 150 mm

Partition example for steel drawer F 22 S4 365050 with 2 compartments:
 1 "divider" S4/S5
 1 rubber "mat" S4/S5



EXAMPLE E4 365050 C0 for heights: 100 mm

Partition example for steel drawer F 22 S4 365050 with 24 compartments:
 24 "yellow" inset boxes



EXAMPLE E4 365050 D0 for heights: 100 mm

Partition example for steel drawer F 22 S4 365050 with 12 compartments:
 12 "blue" inset boxes



EXAMPLE E4 365050 E0 for heights: 100 mm

Partition example for steel drawer F 22 S4 365050 with 18 compartments:
 12 "yellow" inset boxes
 6 "blue" inset boxes



EXAMPLE E4 365050 F0 for heights: 100 mm

Partition example for steel drawer F 22 S4 365050 with 8 compartments:
 8 "green" inset boxes



EXAMPLE E4 365050 GO for heights: 100 mm

Partition example for steel drawer F 22 S4 365050 with 10 compartments:
6 "blue" inset boxes
4 "green" inset boxes



EXAMPLE E4 365050 HO for heights: 100 mm

Partition example for steel drawer F 22 S4 365050 with 7 compartments:
3 "blue" inset boxes
2 "green" inset boxes
2 "forest" inset boxes



EXAMPLE E4 365050 LO for heights: 100 mm

Partition example for steel drawer F 22 S4 365050 with 12 compartments:
4 "yellow" inset boxes
4 "blue" inset boxes
4 "green" inset boxes



EXAMPLE E4 365050 MO for heights: 100 mm

Partition example for steel drawer F 22 S4 365050 with 16 compartments:
4 "red" inset boxes
5 "yellow" inset boxes
4 "blue" inset boxes
3 "green" inset boxes



EXAMPLE E4 365050 NO for heights: 100 mm

Partition example for steel drawer F 22 S4 365050 with 11 compartments:
4 "red" inset boxes
3 "yellow" inset boxes
2 "blue" inset boxes
1 "green" inset box
1 "divider" S4/S5
1 rubber "mat" S4/S5



EXAMPLE E4 365050 PO for heights: 100 mm

Partition example for steel drawer F 22 S4 365050 with 7 compartments:
2 "yellow" inset boxes
2 "blue" inset boxes
2 "green" inset boxes
1 "divider" S4/S5
1 rubber "mat" S4/S5



DIVIDERS E4 365 071

Dividers for drawers series S4 suitable for modules with width 717 mm and depth 365 mm
 Drawer load capacity: 40 Kg
 Available heights: 100 - 150 mm



EXAMPLE E4 365071 A0 for heights: 100 - 150 mm

Partition example for steel drawer F 22 S4 365071:
 1 rubber "mat" S4/S5



EXAMPLE E4 365071 B1 for heights: 100 mm

EXAMPLE E4 365071 B3 for heights: 150 mm

Partition example for steel drawer F 22 S4 365071 with 2 compartments:
 1 "divider" S4/S5
 1 rubber "mat" S4/S5



EXAMPLE E4 365071 C1 for heights: 100 mm

EXAMPLE E4 365071 C3 for heights: 150 mm

Partition example for steel drawer F 22 S4 365071 with 3 compartments:
 2 "dividers" S4/S5
 1 rubber "mat" S4/S5



EXAMPLE E4 365071 D0 for heights: 100 mm

Partition example for steel drawer F 22 S4 365071 with 18 compartments:
 18 "blue" inset boxes



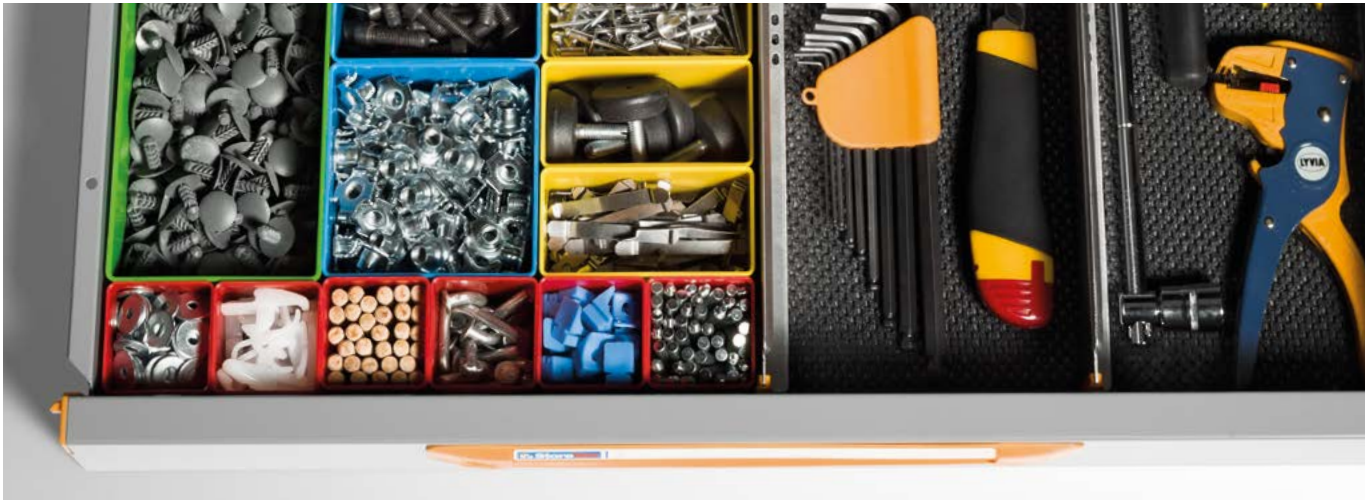
EXAMPLE E4 365071 E0 for heights: 100 mm

Partition example for steel drawer F 22 S4 365071 with 27 compartments:
 18 "yellow" inset boxes
 9 "blue" inset boxes



EXAMPLE E4 365071 F0 for heights: 100 mm

Partition example for steel drawer F 22 S4 365071 with 12 compartments:
 12 "green" inset boxes



EXAMPLE E4 365071 GO for heights: 100 mm

Partition example for steel drawer F 22 S4 365071 with 15 compartments:
9 "blue" inset boxes
6 "green" inset boxes



EXAMPLE E4 365071 HO for heights: 100 mm

Partition example for steel drawer F 22 S4 365071 with 12 compartments:
6 "blue" inset boxes
4 "green" inset boxes
2 "forest" inset boxes



EXAMPLE E4 365071 LO for heights: 100 mm

Partition example for steel drawer F 22 S4 365071 with 19 compartments:
6 "yellow" inset boxes
9 "blue" inset boxes
4 "green" inset boxes



EXAMPLE E4 365071 MO for heights: 100 mm

Partition example for steel drawer F 22 S4 365071 with 26 compartments:
8 "red" inset boxes
8 "yellow" inset boxes
6 "blue" inset boxes
4 "green" inset boxes



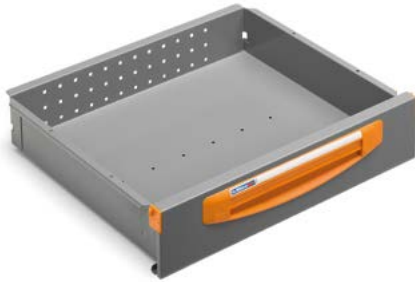
EXAMPLE E4 365071 NO for heights: 100 mm

Partition example for steel drawer F 22 S4 365071 with 15 compartments:
4 "red" inset boxes
4 "yellow" inset boxes
3 "blue" inset boxes
2 "green" inset boxes
2 "dividers" S4/S5
1 rubber "mat" S4/S5



EXAMPLE E4 365071 PO for heights: 100 mm

Partition example for steel drawer F 22 S4 365071 with 12 compartments:
6 "yellow" inset boxes
3 "blue" inset boxes
2 "green" inset boxes
1 "divider" S4/S5
1 rubber "mat" S4/S5



DIVIDERS

E4 445 050

Dividers for drawers series S4 suitable for modules with width 508 mm and depth 445 mm
 Drawer load capacity: 40 Kg
 Available heights: 100 - 150 mm



EXAMPLE E4 445050 A0 for heights: 100 - 150 mm

Partition example for steel drawer F 22 S4 445050:
 1 rubber "mat" S4/S5



EXAMPLE E4 445050 B1 for heights: 100 mm

EXAMPLE E4 445050 B3 for heights: 150 mm

Partition example for steel drawer F 22 S4 445050 with 2 compartments:
 1 "divider" S4/S5
 1 rubber "mat" S4/S5



EXAMPLE E4 445050 C0 for heights: 100 mm

Partition example for steel drawer F 22 S4 445050 with 28 compartments:
 28 "yellow" inset boxes



EXAMPLE E4 445050 D0 for heights: 100 mm

Partition example for steel drawer F 22 S4 445050 with 16 compartments:
 4 "yellow" inset boxes
 12 "blue" inset boxes



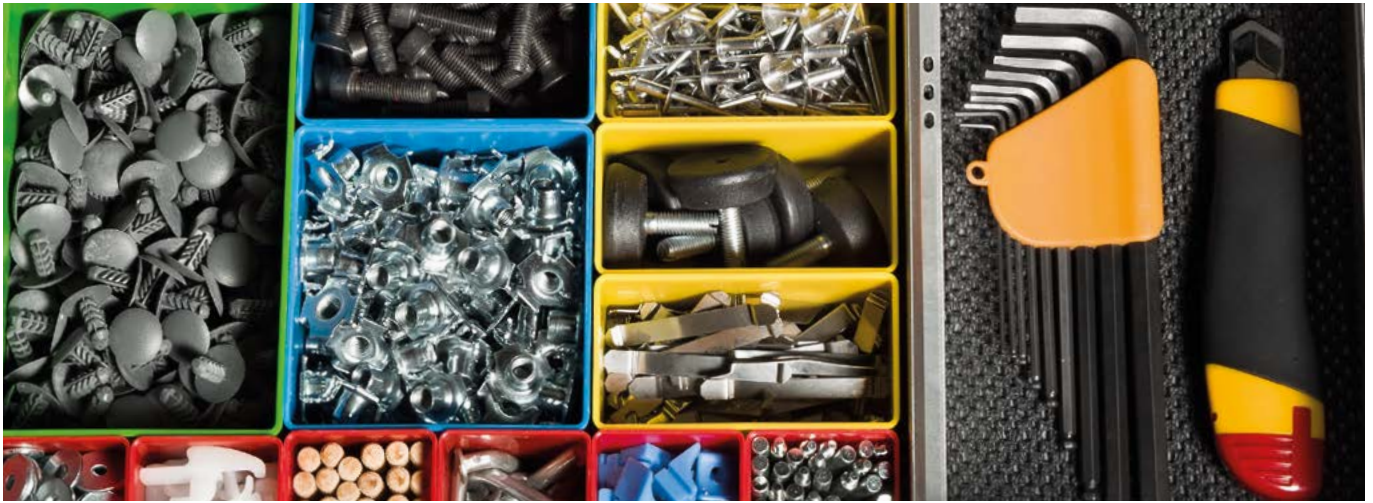
EXAMPLE E4 445050 E0 for heights: 100 mm

Partition example for steel drawer F 22 S4 445050 with 20 compartments:
 12 "yellow" inset boxes
 8 "blue" inset boxes



EXAMPLE E4 445050 F0 for heights: 100 mm

Partition example for steel drawer F 22 S4 445050 with 10 compartments:
 1 "yellow" inset box
 9 "green" inset boxes



EXAMPLE E4 445050 GO for heights: 100 mm

Partition example for steel drawer F 22 S4 445050 with 12 compartments:
8 "blue" inset boxes
4 "green" inset boxes



EXAMPLE E4 445050 HO for heights: 100 mm

Partition example for steel drawer F 22 S4 445050 with 11 compartments:
4 "yellow" inset boxes
3 "blue" inset boxes
2 "green" inset boxes
2 "forest" inset boxes



EXAMPLE E4 445050 LO for heights: 100 mm

Partition example for steel drawer F 22 S4 445050 with 16 compartments:
8 "yellow" inset boxes
4 "blue" inset boxes
4 "green" inset boxes



EXAMPLE E4 445050 MO for heights: 100 mm

Partition example for steel drawer F 22 S4 445050 with 19 compartments:
4 "red" inset boxes
8 "yellow" inset boxes
3 "blue" inset boxes
4 "green" inset boxes



EXAMPLE E4 445050 NO for heights: 100 mm

Partition example for steel drawer F 22 S4 445050 with 13 compartments:
4 "red" inset boxes
5 "yellow" inset boxes
2 "blue" inset boxes
1 "green" inset box
1 "divider" S4/S5
1 rubber "mat" S4/S5



EXAMPLE E4 445050 PO for heights: 100 mm

Partition example for steel drawer F 22 S4 445050 with 8 compartments:
2 "yellow" inset boxes
3 "blue" inset boxes
2 "green" inset boxes
1 "divider" S4/S5
1 rubber "mat" S4/S5



DIVIDERS E4 445 071

Dividers for drawers series S4 suitable for modules with width 717 mm and depth 445 mm
Drawer load capacity: 40 Kg
Available heights: 100 - 150 mm



EXAMPLE E4 445071 A0 for heights: 100 - 150 mm

Partition example for steel drawer F 22 S4 445071:
1 rubber "mat" S4/S5



EXAMPLE E4 445071 B1 for heights: 100 mm

EXAMPLE E4 445071 B3 for heights: 150 mm

Partition example for steel drawer F 22 S4 445071 with 2 compartments:
1 "divider" S4/S5
1 rubber "mat" S4/S5



EXAMPLE E4 445071 C1 for heights: 100 mm

EXAMPLE E4 445071 C3 for heights: 150 mm

Partition example for steel drawer F 22 S4 445071 with 3 compartments:
2 "dividers" S4/S5
1 rubber "mat" S4/S5



EXAMPLE E4 445071 D0 for heights: 100 mm

Partition example for steel drawer F 22 S4 445071 with 24 compartments:
6 "yellow" inset boxes
18 "blue" inset boxes



EXAMPLE E4 445071 E0 for heights: 100 mm

Partition example for steel drawer F 22 S4 445071 with 30 compartments:
18 "yellow" inset boxes
12 "blue" inset boxes



EXAMPLE E4 445071 F0 for heights: 100 mm

Partition example for steel drawer F 22 S4 445071 with 14 compartments:
14 "green" inset boxes



EXAMPLE E4 445071 G0 for heights: 100 mm

Partition example for steel drawer F 22 S4 445071 with 18 compartments:
12 "blue" inset boxes
6 "green" inset boxes



EXAMPLE E4 445071 H0 for heights: 100 mm

Partition example for steel drawer F 22 S4 445071 with 18 compartments:
6 "yellow" inset boxes 2 "forest" inset boxes
6 "blue" inset boxes
4 "green" inset boxes



EXAMPLE E4 445071 L0 for heights: 100 mm

Partition example for steel drawer F 22 S4 445071 with 24 compartments:
12 "yellow" inset boxes
6 "blue" inset boxes
6 "green" inset boxes



EXAMPLE E4 445071 M0 for heights: 100 mm

Partition example for steel drawer F 22 S4 445071 with 32 compartments:
8 "red" inset boxes 4 "green" inset boxes
14 "yellow" inset boxes
6 "blue" inset boxes



EXAMPLE E4 445071 N0 for heights: 100 mm

Partition example for steel drawer F 22 S4 445071 with 19 compartments:
6 "red" inset boxes 2 "green" inset boxes
6 "yellow" inset boxes 2 "dividers" S4/S5
3 "blue" inset boxes 1 rubber "mat" S4/S5



EXAMPLE E4 445071 P0 for heights: 100 mm

Partition example for steel drawer F 22 S4 445071 with 14 compartments:
7 "yellow" inset boxes 1 "divider" S4/S5
4 "blue" inset boxes 1 rubber "mat" S4/S5
2 "green" inset boxes



DIVIDERS

E4 508 036

Dividers for drawers series S4 suitable for modules with width 365 mm and depth 508 mm
 Drawer load capacity: 40 Kg
 Available heights: 100 - 150 mm



EXAMPLE E4 508036 A0 for heights: 100 - 150 mm

Partition example for steel drawer F 22 S4 508036:
 1 rubber "mat" S4



EXAMPLE E4 508036 B1 for heights: 100 mm

EXAMPLE E4 508036 B3 for heights: 150 mm

Partition example for steel drawer F 22 S4 508036 with 2 compartments:
 1 "divider" S4
 1 rubber "mat" S4



EXAMPLE E4 508036 C1 for heights: 100 mm

EXAMPLE E4 508036 C3 for heights: 150 mm

Partition example for steel drawer F 22 S4 508036 with 3 compartments:
 2 "dividers" S4
 1 rubber "mat" S4



EXAMPLE E4 508036 D0 for heights: 100 mm

Partition example for steel drawer F 22 S4 508036 with 23 compartments:
 1 "red" inset box
 22 "yellow" inset boxes



EXAMPLE E4 508036 E0 for heights: 100 mm

Partition example for steel drawer F 22 S4 508036 with 15 compartments:
 1 "red" inset box
 6 "yellow" inset boxes
 8 "blue" inset boxes



EXAMPLE E4 508036 F0 for heights: 100 mm

Partition example for steel drawer F 22 S4 508036 with 9 compartments:
 1 "red" inset box
 1 "yellow" inset box
 7 "green" inset boxes



EXAMPLE E4 508036 G0 for heights: 100 mm

Partition example for steel drawer F 22 S4 508036 with 11 compartments:
 1 "red" inset box 4 "green" inset boxes
 2 "yellow" inset boxes
 4 "blue" inset boxes



EXAMPLE E4 508036 H0 for heights: 100 mm

Partition example for steel drawer F 22 S4 508036 with 9 compartments:
 1 "red" inset box 2 "forest" inset boxes
 4 "yellow" inset boxes
 2 "green" inset boxes



EXAMPLE E4 508036 L0 for heights: 100 mm

Partition example for steel drawer F 22 S4 508036 with 17 compartments:
 1 "red" inset box 2 "green" inset boxes
 12 "yellow" inset boxes
 2 "blue" inset boxes



EXAMPLE E4 508036 M0 for heights: 100 mm

Partition example for steel drawer F 22 S4 508036 with 17 compartments:
 5 "red" inset boxes 2 "green" inset boxes
 6 "yellow" inset boxes
 4 "blue" inset boxes



EXAMPLE E4 508036 N0 for heights: 100 mm

Partition example for steel drawer F 22 S4 508036 with 13 compartments:
 5 "red" inset boxes 1 "green" inset box
 5 "yellow" inset boxes 1 "divider" S4
 1 "blue" inset box 1 rubber "mat" S4



EXAMPLE E4 508036 P0 for heights: 100 mm

Partition example for steel drawer F 22 S4 508036 with 10 compartments:
 5 "yellow" inset boxes 1 "divider" S4
 2 "blue" inset boxes 1 rubber "mat" S4
 2 "green" inset boxes



DIVIDERS

E4 508 044

Dividers for drawers series S4 suitable for modules with width 445 mm and depth 508 mm
 Drawer load capacity: 40 Kg
 Available heights: 100 - 150 mm



EXAMPLE E4 508044 A0 for heights: 100 - 150 mm

Partition example for steel drawer F 22 S4 508044:
 1 rubber "mat" S4/S5



EXAMPLE E4 508044 B1 for heights: 100 mm

EXAMPLE E4 508044 B3 for heights: 150 mm

Partition example for steel drawer F 22 S4 508044 with 2 compartments:
 1 "divider" S4
 1 rubber "mat" S4/S5



EXAMPLE E4 508044 C1 for heights: 100 mm

EXAMPLE E4 508044 C3 for heights: 150 mm

Partition example for steel drawer F 22 S4 508044 with 3 compartments:
 2 "dividers" S4
 1 rubber "mat" S4/S5



EXAMPLE E4 508044 D0 for heights: 100 mm

Partition example for steel drawer F 22 S4 508044 with 27 compartments:
 27 "yellow" inset boxes



EXAMPLE E4 508044 E0 for heights: 100 mm

Partition example for steel drawer F 22 S4 508044 with 15 compartments:
 3 "yellow" inset boxes
 12 "blue" inset boxes



EXAMPLE E4 508044 F0 for heights: 100 mm

Partition example for steel drawer F 22 S4 508044 with 9 compartments:
 9 "green" inset boxes



EXAMPLE E4 508044 GO for heights: 100 mm

Partition example for steel drawer F 22 S4 508044 with 11 compartments:
6 "blue" inset boxes
5 "green" inset boxes



EXAMPLE E4 508044 HO for heights: 100 mm

Partition example for steel drawer F 22 S4 508044 with 8 compartments:
3 "blue" inset boxes
3 "green" inset boxes
2 "forest" inset boxes



EXAMPLE E4 508044 LO for heights: 100 mm

Partition example for steel drawer F 22 S4 508044 with 18 compartments:
12 "yellow" inset boxes
3 "blue" inset boxes
3 "green" inset boxes



EXAMPLE E4 508044 MO for heights: 100 mm

Partition example for steel drawer F 22 S4 508044 with 21 compartments:
6 "red" inset boxes
8 "yellow" inset boxes
5 "blue" inset boxes
2 "green" inset boxes



EXAMPLE E4 508044 NO for heights: 100 mm

Partition example for steel drawer F 22 S4 508044 with 13 compartments:
4 "red" inset boxes
5 "yellow" inset boxes
1 "blue" inset box
2 "green" inset boxes
1 "divider" S4
1 rubber "mat" S4/S5



EXAMPLE E4 508044 PO for heights: 100 mm

Partition example for steel drawer F 22 S4 508044 with 10 compartments:
3 "yellow" inset boxes
3 "blue" inset boxes
3 "green" inset boxes
1 "divider" S4
1 rubber "mat" S4/S5



DIVIDERS

E5 365 050

Dividers for drawers series S5 suitable for modules with width 508 mm and depth 365 mm
 Drawer load capacity: 50 Kg
 Available heights: 75 - 100 - 125 - 150 - 200 mm



EXAMPLE E5 365050 A0 for heights: 75 - 100 - 125 - 150 - 200 mm

Partition example for steel drawer F 22 S5 365050:
 1 rubber "mat" S4/S5



EXAMPLE E5 365050 B0 for heights: 75 mm

EXAMPLE E5 365050 B1 for heights: 100 mm

EXAMPLE E5 365050 B2 for heights: 125 mm

EXAMPLE E5 365050 B3 for heights: 150 mm

EXAMPLE E5 365050 B4 for heights: 200 mm

Partition example for steel drawer F 22 S5 365050 with 2 compartments:
 1 "divider" S4/S5
 1 rubber "mat" S4/S5



EXAMPLE E5 365050 C0 for heights: 100 mm

Partition example for steel drawer F 22 S5 365050 with 21 compartments:
 21 "yellow" inset boxes
 1 "adapter" S5



EXAMPLE E5 365050 D0 for heights: 100 mm

Partition example for steel drawer F 22 S5 365050 with 12 compartments:
 3 "yellow" inset boxes
 9 "blue" inset boxes
 1 "adapter" S5



EXAMPLE E5 365050 E0 for heights: 100 mm

Partition example for steel drawer F 22 S5 365050 with 15 compartments:
 9 "yellow" inset boxes
 6 "blue" inset boxes
 1 "adapter" S5



EXAMPLE E5 365050 F0 for heights: 100 mm

Partition example for steel drawer F 22 S5 365050 with 7 compartments:
 7 "green" inset boxes
 1 "adapter" S5



EXAMPLE E5 365050 GO for heights: 100 mm

Partition example for steel drawer F 22 S5 365050 with 9 compartments:
 6 "blue" inset boxes
 3 "green" inset boxes
 1 "adapter" S5



EXAMPLE E5 365050 HO for heights: 100 mm

Partition example for steel drawer F 22 S5 365050 with 7 compartments:
 3 "blue" inset boxes
 3 "green" inset boxes
 1 "forest" inset box
 1 "adapter" S5



EXAMPLE E5 365050 LO for heights: 100 mm

Partition example for steel drawer F 22 S5 365050 with 12 compartments:
 6 "yellow" inset boxes
 3 "blue" inset boxes
 3 "green" inset boxes
 1 "adapter" S5



EXAMPLE E5 365050 MO for heights: 100 mm

Partition example for steel drawer F 22 S5 365050 with 17 compartments:
 6 "red" inset boxes
 6 "yellow" inset boxes
 3 "blue" inset boxes
 2 "green" inset boxes
 1 "adapter" S5



EXAMPLE E5 365050 NO for heights: 100 mm

Partition example for steel drawer F 22 S5 365050 with 6 compartments:
 3 "yellow" inset boxes
 3 "forest" inset boxes
 1 "adapter" S5



EXAMPLE E5 365050 PO for heights: 100 mm

Partition example for steel drawer F 22 S5 365050 with 11 compartments:
 9 "yellow" inset boxes
 2 "forest" inset boxes
 1 "adapter" S5



DIVIDERS

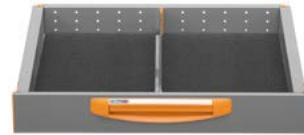
E5 365 071

Dividers for drawers series S5 suitable for modules with width 717 mm and depth 365 mm
 Drawer load capacity: 50 Kg
 Available heights: 75 - 100 - 125 - 150 - 200 mm



EXAMPLE E5 365071 A0 for heights: 75 - 100 - 125 - 150 - 200 mm

Partition example for steel drawer F 22 S5 365071:
 1 rubber "mat" S4/S5



EXAMPLE E5 365071 B0 for heights: 75 mm

EXAMPLE E5 365071 B1 for heights: 100 mm

EXAMPLE E5 365071 B2 for heights: 125 mm

EXAMPLE E5 365071 B3 for heights: 150 mm

EXAMPLE E5 365071 B4 for heights: 200 mm

Partition example for steel drawer F 22 S5 365071 with 2 compartments:
 1 "divider" S4/S5
 1 rubber "mat" S4/S5



EXAMPLE E5 365071 C0 for heights: 75 mm

EXAMPLE E5 365071 C1 for heights: 100 mm

EXAMPLE E5 365071 C2 for heights: 125 mm

EXAMPLE E5 365071 C3 for heights: 150 mm

EXAMPLE E5 365071 C4 for heights: 200 mm

Partition example for steel drawer F 22 S5 365071 with 3 compartments:
 2 "dividers" S4/S5
 1 rubber "mat" S4/S5



EXAMPLE E5 365071 D0 for heights: 100 mm

Partition example for steel drawer F 22 S5 365071 with 18 compartments:
 3 "yellow" inset boxes
 15 "blue" inset boxes
 1 "adapter" S5



EXAMPLE E5 365071 E0 for heights: 100 mm

Partition example for steel drawer F 22 S5 365071 with 24 compartments:
 15 "yellow" inset boxes
 9 "blue" inset boxes
 1 "adapter" S5



EXAMPLE E5 365071 F0 for heights: 100 mm

Partition example for steel drawer F 22 S5 365071 with 11 compartments:
 11 "green" inset boxes
 1 "adapter" S5



EXAMPLE E5 365071 G0 for heights: 100 mm

Partition example for steel drawer F 22 S5 365071 with 14 compartments:
 9 "blue" inset boxes
 5 "green" inset boxes
 1 "adapter" S5



EXAMPLE E5 365071 H0 for heights: 100 mm

Partition example for steel drawer F 22 S5 365071 with 11 compartments:
 6 "blue" inset boxes
 3 "green" inset boxes
 2 "forest" inset boxes
 1 "adapter" S5



EXAMPLE E5 365071 L0 for heights: 100 mm

Partition example for steel drawer F 22 S5 365071 with 19 compartments:
 9 "yellow" inset boxes
 6 "blue" inset boxes
 4 "green" inset boxes
 1 "adapter" S5



EXAMPLE E5 365071 M0 for heights: 100 mm

Partition example for steel drawer F 22 S5 365071 with 25 compartments:
 8 "red" inset boxes
 8 "yellow" inset boxes
 6 "blue" inset boxes
 3 "green" inset boxes
 1 "adapter" S5



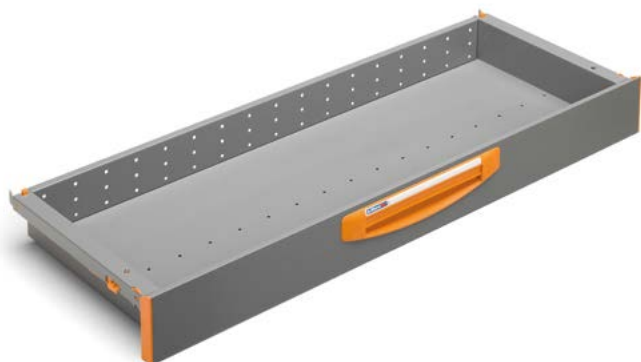
EXAMPLE E5 365071 N0 for heights: 100 mm

Partition example for steel drawer F 22 S5 365071 with 8 compartments:
 3 "yellow" inset boxes
 5 "forest" inset boxes
 1 "adapter" S5



EXAMPLE E5 365071 P0 for heights: 100 mm

Partition example for steel drawer F 22 S5 365071 with 18 compartments:
 15 "yellow" inset boxes
 3 "forest" inset boxes
 1 "adapter" S5



DIVIDERS

E5 365 101

Dividers for drawers series S5 suitable for modules with width 1016 mm and depth 365 mm
 Drawer load capacity: 50 Kg
 Available heights: 75 - 100 - 125 - 150 - 200 mm



EXAMPLE E5 365101 A0 for heights: 75 - 100 - 125 - 150 - 200 mm

Partition example for steel drawer F 22 S5 365101:
 1 rubber "mat" S4/S5



EXAMPLE E5 365101 B0 for heights: 75 mm

EXAMPLE E5 365101 B1 for heights: 100 mm

EXAMPLE E5 365101 B2 for heights: 125 mm

EXAMPLE E5 365101 B3 for heights: 150 mm

EXAMPLE E5 365101 B4 for heights: 200 mm

Partition example for steel drawer F 22 S5 365101 with 3 compartments:
 2 "dividers" S4/S5
 1 rubber "mat" S4/S5



EXAMPLE E5 365101 C0 for heights: 75 mm

EXAMPLE E5 365101 C1 for heights: 100 mm

EXAMPLE E5 365101 C2 for heights: 125 mm

EXAMPLE E5 365101 C3 for heights: 150 mm

EXAMPLE E5 365101 C4 for heights: 200 mm

Partition example for steel drawer F 22 S5 365101 with 4 compartments:
 3 "dividers" S4/S5
 1 rubber "mat" S4/S5



EXAMPLE E5 365101 D0 for heights: 100 mm

Partition example for steel drawer F 22 S5 365101 with 27 compartments:
 3 "yellow" inset boxes
 24 "blue" inset boxes



EXAMPLE E5 365101 E0 for heights: 100 mm

Partition example for steel drawer F 22 S5 365101 with 39 compartments:
 27 "yellow" inset boxes
 12 "blue" inset boxes



EXAMPLE E5 365101 F0 for heights: 100 mm

Partition example for steel drawer F 22 S5 365101 with 17 compartments:
 17 "green" inset boxes



EXAMPLE E5 365101 G0 for heights: 100 mm

Partition example for steel drawer F 22 S5 365101 with 21 compartments:
12 "blue" inset boxes
9 "green" inset boxes



EXAMPLE E5 365101 H0 for heights: 100 mm

Partition example for steel drawer F 22 S5 365101 with 17 compartments:
9 "blue" inset boxes
5 "green" inset boxes
3 "forest" inset boxes



EXAMPLE E5 365101 L0 for heights: 100 mm

Partition example for steel drawer F 22 S5 365101 with 28 compartments:
12 "yellow" inset boxes
9 "blue" inset boxes
7 "green" inset boxes



EXAMPLE E5 365101 M0 for heights: 100 mm

Partition example for steel drawer F 22 S5 365101 with 34 compartments:
8 "red" inset boxes
11 "yellow" inset boxes
9 "blue" inset boxes
6 "green" inset boxes



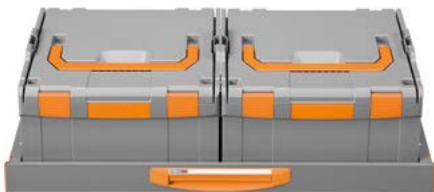
EXAMPLE E5 365101 N0 for heights: 100 mm

Partition example for steel drawer F 22 S5 365101 with 23 compartments:
6 "red" inset boxes
2 "dividers" S4/S5
6 "yellow" inset boxes
1 rubber "mat" S4/S5
6 "blue" inset boxes
2 "adapters" S5
3 "green" inset boxes



EXAMPLE E5 365101 P0 for heights: 100 mm

Partition example for steel drawer F 22 S5 365101 with 18 compartments:
6 "yellow" inset boxes
1 "divider" S4/S5
6 "blue" inset boxes
1 rubber "mat" S4/S5
5 "green" inset boxes
2 "adapters" S5



EXAMPLE E5 365101 R0 for heights: 75 mm

Example for steel drawer F 22 S5 365101 with 2 cases:
2 Store Box 238
1 rubber "mat" S4/S5



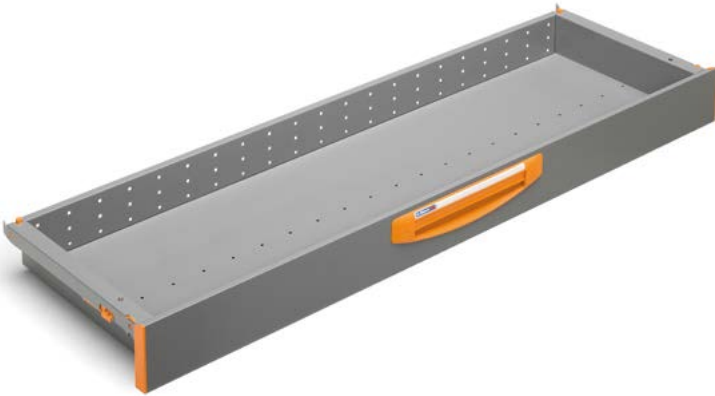
EXAMPLE E5 365101 S0 for heights: 100 mm

Example for steel drawer F 22 S5 365101 with 2 cases:
2 Store Box 374
1 rubber "mat" S4/S5

DIVIDERS

E5 365 122

Dividers for drawers series S5 suitable for modules with width 1225 mm and depth 365 mm
 Drawer load capacity: 50 Kg
 Available heights: 75 - 100 - 125 - 150 - 200 mm



EXAMPLE E5 365122 A0 for heights: 75 - 100 - 125 - 150 - 200 mm

Partition example for steel drawer F 22 S5 365122:
 1 rubber "mat" S4/S5



EXAMPLE E5 365122 B0 for heights: 75 mm

EXAMPLE E5 365122 B1 for heights: 100 mm

EXAMPLE E5 365122 B2 for heights: 125 mm

EXAMPLE E5 365122 B3 for heights: 150 mm

EXAMPLE E5 365122 B4 for heights: 200 mm

Partition example for steel drawer F 22 S5 365122 with 3 compartments:
 2 "dividers" S4/S5
 1 rubber "mat" S4/S5



EXAMPLE E5 365122 C0 for heights: 75 mm

EXAMPLE E5 365122 C1 for heights: 100 mm

EXAMPLE E5 365122 C2 for heights: 125 mm

EXAMPLE E5 365122 C3 for heights: 150 mm

EXAMPLE E5 365122 C4 for heights: 200 mm

Partition example for steel drawer F 22 S5 365122 with 4 compartments:
 3 "dividers" S4/S5
 1 rubber "mat" S4/S5



EXAMPLE E5 365122 D0 for heights: 100 mm

Partition example for steel drawer F 22 S5 365122 with 33 compartments:
 3 "yellow" inset boxes
 30 "blue" inset boxes



EXAMPLE E5 365122 E0 for heights: 100 mm

Partition example for steel drawer F 22 S5 365122 with 45 compartments:
 27 "yellow" inset boxes
 18 "blue" inset boxes



EXAMPLE E5 365122 F0 for heights: 100 mm

Partition example for steel drawer F 22 S5 365122 with 21 compartments:
 21 "green" inset boxes



EXAMPLE E5 365122 G0 for heights: 100 mm

Partition example for steel drawer F 22 S5 365122 with 26 compartments:
15 "blue" inset boxes
11 "green" inset boxes



EXAMPLE E5 365122 H0 for heights: 100 mm

Partition example for steel drawer F 22 S5 365122 with 21 compartments:
9 "blue" inset boxes
9 "green" inset boxes
3 "forest" inset boxes



EXAMPLE E5 365122 L0 for heights: 100 mm

Partition example for steel drawer F 22 S5 365122 with 37 compartments:
18 "yellow" inset boxes
12 "blue" inset boxes
7 "green" inset boxes



EXAMPLE E5 365122 M0 for heights: 100 mm

Partition example for steel drawer F 22 S5 365122 with 47 compartments:
10 "red" inset boxes
22 "yellow" inset boxes
9 "blue" inset boxes
6 "green" inset boxes



EXAMPLE E5 365122 N0 for heights: 100 mm

Partition example for steel drawer F 22 S5 365122 with 22 compartments:
4 "red" inset boxes
7 "yellow" inset boxes
6 "blue" inset boxes
3 "green" inset boxes
2 "dividers" S4/S5
1 rubber "mat" S4/S5
2 "adapters" S5



EXAMPLE E5 365122 P0 for heights: 100 mm

Partition example for steel drawer F 22 S5 365122 with 24 compartments:
9 "yellow" inset boxes
9 "blue" inset boxes
5 "green" inset boxes
1 "divider" S4/S5
1 rubber "mat" S4/S5
2 "adapters" S5



EXAMPLE E5 365122 R0 for heights: 75 mm

Example for steel drawer F 22 S5 365122 with 2 cases and 2 boxes:
2 Store Box 238
2 boxes size 2115A with holder
1 rubber "mat" S4/S5



EXAMPLE E5 365122 S0 for heights: 100 mm

Example for steel drawer F 22 S5 365122 with 2 cases and 2 boxes:
2 Store Box 374
2 boxes size 2115A with holder
1 rubber "mat" S4/S5



DIVIDERS

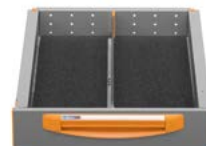
E5 445 050

Dividers for drawers series S5 suitable for modules with width 508 mm and depth 445 mm
 Drawer load capacity: 50 Kg
 Available heights: 75 - 100 - 125 - 150 - 200 mm



EXAMPLE E5 445050 A0 for heights: 75 - 100 - 125 - 150 - 200 mm

Partition example for steel drawer F 22 S5 445050:
 1 rubber "mat" S4/S5



EXAMPLE E5 445050 B0 for heights: 75 mm

EXAMPLE E5 445050 B1 for heights: 100 mm

EXAMPLE E5 445050 B2 for heights: 125 mm

EXAMPLE E5 445050 B3 for heights: 150 mm

EXAMPLE E5 445050 B4 for heights: 200 mm

Partition example for steel drawer F 22 S5 445050 with 2 compartments:
 1 "divider" S4/S5
 1 rubber "mat" S4/S5



EXAMPLE E5 445050 C0 for heights: 100 mm

Partition example for steel drawer F 22 S5 445050 with 26 compartments:
 3 "red" inset boxes
 23 "yellow" inset boxes
 1 "adapter" S5



EXAMPLE E5 445050 D0 for heights: 100 mm

Partition example for steel drawer F 22 S5 445050 with 17 compartments:
 3 "red" inset boxes
 5 "yellow" inset boxes
 9 "blue" inset boxes
 1 "adapter" S5



EXAMPLE E5 445050 E0 for heights: 100 mm

Partition example for steel drawer F 22 S5 445050 with 20 compartments:
 3 "red" inset boxes
 11 "yellow" inset boxes
 6 "blue" inset boxes
 1 "adapter" S5



EXAMPLE E5 445050 F0 for heights: 100 mm

Partition example for steel drawer F 22 S5 445050 with 12 compartments:
 3 "red" inset boxes
 2 "yellow" inset boxes
 7 "green" inset boxes
 1 "adapter" S5



EXAMPLE E5 445050 GO for heights: 100 mm

Partition example for steel drawer F 22 S5 445050 with 14 compartments:

3 "red" inset boxes	3 "green" inset boxes
2 "yellow" inset boxes	1 "adapter" S5
6 "blue" inset boxes	



EXAMPLE E5 445050 HO for heights: 100 mm

Partition example for steel drawer F 22 S5 445050 with 12 compartments:

3 "red" inset boxes	3 "green" inset boxes
2 "yellow" inset boxes	1 "forest" inset box
3 "blue" inset boxes	1 "adapter" S5



EXAMPLE E5 445050 LO for heights: 100 mm

Partition example for steel drawer F 22 S5 445050 with 17 compartments:

3 "red" inset boxes	3 "green" inset boxes
8 "yellow" inset boxes	1 "adapter" S5
3 "blue" inset boxes	



EXAMPLE E5 445050 MO for heights: 100 mm

Partition example for steel drawer F 22 S5 445050 with 21 compartments:

9 "red" inset boxes	2 "green" inset boxes
6 "yellow" inset boxes	1 "adapter" S5
4 "blue" inset boxes	



EXAMPLE E5 445050 NO for heights: 100 mm

Partition example for steel drawer F 22 S5 445050 with 10 compartments:

1 "red" inset box	1 "adapter" S5
6 "yellow" inset boxes	
3 "forest" inset boxes	



EXAMPLE E5 445050 PO for heights: 100 mm

Partition example for steel drawer F 22 S5 445050 with 16 compartments:

3 "red" inset boxes	1 "adapter" S5
11 "yellow" inset boxes	
2 "forest" inset boxes	



DIVIDERS

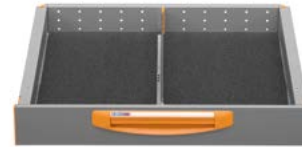
E5 445 071

Dividers for drawers series S5 suitable for modules with width 717 mm and depth 445 mm
 Drawer load capacity: 50 Kg
 Available heights: 75 - 100 - 125 - 150 - 200 mm



EXAMPLE E5 445071 A0 for heights: 75 - 100 - 125 - 150 - 200 mm

Partition example for steel drawer F 22 S5 445071:
 1 rubber "mat" S4/S5



EXAMPLE E5 445071 B0 for heights: 75 mm

EXAMPLE E5 445071 B1 for heights: 100 mm

EXAMPLE E5 445071 B2 for heights: 125 mm

EXAMPLE E5 445071 B3 for heights: 150 mm

EXAMPLE E5 445071 B4 for heights: 200 mm

Partition example for steel drawer F 22 S5 445071 with 2 compartments:
 1 "divider" S4/S5
 1 rubber "mat" S4/S5



EXAMPLE E5 445071 C0 for heights: 75 mm

EXAMPLE E5 445071 C1 for heights: 100 mm

EXAMPLE E5 445071 C2 for heights: 125 mm

EXAMPLE E5 445071 C3 for heights: 150 mm

EXAMPLE E5 445071 C4 for heights: 200 mm

Partition example for steel drawer F 22 S5 445071 with 3 compartments:
 2 "dividers" S4/S5
 1 rubber "mat" S4/S5



EXAMPLE E5 445071 D0 for heights: 100 mm

Partition example for steel drawer F 22 S5 445071 with 25 compartments:
 3 "red" inset boxes 1 "adapter" S5

7 "yellow" inset boxes

15 "blue" inset boxes



EXAMPLE E5 445071 E0 for heights: 100 mm

Partition example for steel drawer F 22 S5 445071 with 28 compartments:
 3 "red" inset boxes 1 "adapter" S5
 13 "yellow" inset boxes
 12 "blue" inset boxes



EXAMPLE E5 445071 F0 for heights: 100 mm

Partition example for steel drawer F 22 S5 445071 with 18 compartments:
 3 "red" inset boxes 1 "adapter" S5

4 "yellow" inset boxes

11 "green" inset boxes



EXAMPLE E5 445071 G0 for heights: 100 mm

Partition example for steel drawer F 22 S5 445071 with 20 compartments:

3 "red" inset boxes	5 "green" inset boxes
2 "yellow" inset boxes	1 "adapter" S5
10 "blue" inset boxes	



EXAMPLE E5 445071 H0 for heights: 100 mm

Partition example for steel drawer F 22 S5 445071 with 18 compartments:

3 "red" inset boxes	3 "green" inset boxes
4 "yellow" inset boxes	2 "forest" inset boxes
6 "blue" inset boxes	1 "adapter" S5



EXAMPLE E5 445071 L0 for heights: 100 mm

Partition example for steel drawer F 22 S5 445071 with 26 compartments:

3 "red" inset boxes	4 "green" inset boxes
13 "yellow" inset boxes	1 "adapter" S5
6 "blue" inset boxes	



EXAMPLE E5 445071 M0 for heights: 100 mm

Partition example for steel drawer F 22 S5 445071 with 31 compartments:

9 "red" inset boxes	3 "green" inset boxes
13 "yellow" inset boxes	1 "adapter" S5
6 "blue" inset boxes	



EXAMPLE E5 445071 N0 for heights: 100 mm

Partition example for steel drawer F 22 S5 445071 with 14 compartments:

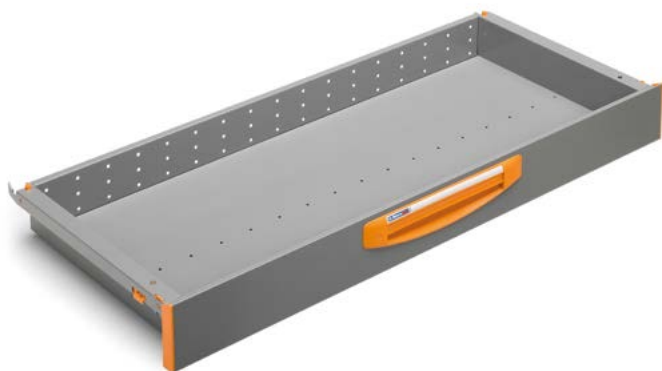
3 "red" inset boxes	4 "forest" inset boxes
4 "yellow" inset boxes	1 "adapter" S5
3 "green" inset boxes	



EXAMPLE E5 445071 P0 for heights: 100 mm

Partition example for steel drawer F 22 S5 445071 with 16 compartments:

3 "red" inset boxes	3 "green" inset boxes
4 "yellow" inset boxes	3 "forest" inset boxes
3 "blue" inset boxes	1 "adapter" S5



DIVIDERS

E5 445 101

Dividers for drawers series S5 suitable for modules with width 1016 mm and depth 445 mm
 Drawer load capacity: 50 Kg
 Available heights: 75 - 100 - 125 - 150 - 200 mm



EXAMPLE E5 445101 A0 for heights: 75 - 100 - 125 - 150 - 200 mm

Partition example for steel drawer F 22 S5 445101:
 1 rubber "mat" S4/S5



EXAMPLE E5 445101 B0 for heights: 75 mm

EXAMPLE E5 445101 B1 for heights: 100 mm

EXAMPLE E5 445101 B2 for heights: 125 mm

EXAMPLE E5 445101 B3 for heights: 150 mm

EXAMPLE E5 445101 B4 for heights: 200 mm

Partition example for steel drawer F 22 S5 445101 with 3 compartments:
 2 "dividers" S4/S5
 1 rubber "mat" S4/S5



EXAMPLE E5 445101 C0 for heights: 75 mm

EXAMPLE E5 445101 C1 for heights: 100 mm

EXAMPLE E5 445101 C2 for heights: 125 mm

EXAMPLE E5 445101 C3 for heights: 150 mm

EXAMPLE E5 445101 C4 for heights: 200 mm

Partition example for steel drawer F 22 S5 445101 with 4 compartments:
 3 "dividers" S4/S5
 1 rubber "mat" S4/S5



EXAMPLE E5 445101 D0 for heights: 100 mm

Partition example for steel drawer F 22 S5 445101 with 36 compartments:
 1 "red" inset box
 11 "yellow" inset boxes
 24 "blue" inset boxes



EXAMPLE E5 445101 E0 for heights: 100 mm

Partition example for steel drawer F 22 S5 445101 with 48 compartments:
 1 "red" inset box
 35 "yellow" inset boxes
 12 "blue" inset boxes



EXAMPLE E5 445101 F0 for heights: 100 mm

Partition example for steel drawer F 22 S5 445101 with 28 compartments:
 1 "red" inset box
 11 "yellow" inset boxes
 16 "green" inset boxes



EXAMPLE E5 445101 G0 for heights: 100 mm

Partition example for steel drawer F 22 S5 445101 with 28 compartments:
 1 "red" inset box 10 "green" inset boxes
 5 "yellow" inset boxes
 12 "blue" inset boxes



EXAMPLE E5 445101 H0 for heights: 100 mm

Partition example for steel drawer F 22 S5 445101 with 26 compartments:
 1 "red" inset box 5 "green" inset boxes
 8 "yellow" inset boxes 3 "forest" inset boxes
 9 "blue" inset boxes



EXAMPLE E5 445101 L0 for heights: 100 mm

Partition example for steel drawer F 22 S5 445101 with 38 compartments:
 1 "red" inset box 6 "green" inset boxes
 21 "yellow" inset boxes
 10 "blue" inset boxes



EXAMPLE E5 445101 M0 for heights: 100 mm

Partition example for steel drawer F 22 S5 445101 with 38 compartments:
 5 "red" inset boxes 6 "green" inset boxes
 15 "yellow" inset boxes
 12 "blue" inset boxes



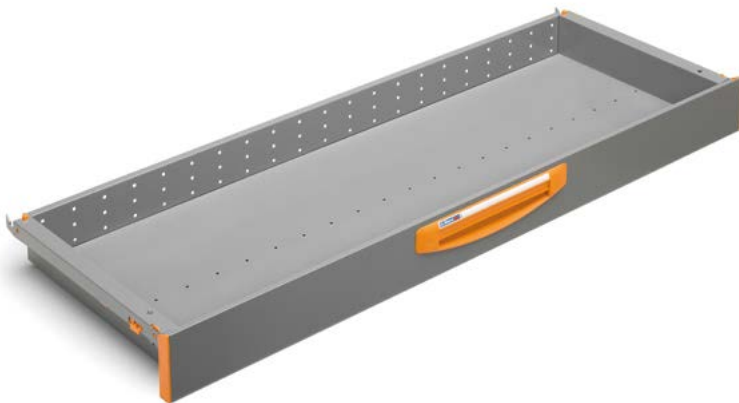
EXAMPLE E5 445101 N0 for heights: 100 mm

Partition example for steel drawer F 22 S5 445101 with 21 compartments:
 4 "red" inset boxes 2 "dividers" S4/S5
 7 "yellow" inset boxes 1 rubber "mat" S4/S5
 5 "blue" inset boxes 2 "adapters" S5
 3 "green" inset boxes



EXAMPLE E5 445101 P0 for heights: 100 mm

Partition example for steel drawer F 22 S5 445101 with 24 compartments:
 1 "red" inset box 1 "divider" S4/S5
 11 "yellow" inset boxes 1 rubber "mat" S4/S5
 6 "blue" inset boxes 2 "adapters" S5
 5 "green" inset boxes



DIVIDERS

E5 445 122

Dividers for drawers series S5 suitable for modules with width 1225 mm and depth 445 mm
 Drawer load capacity: 50 Kg
 Available heights: 75 - 100 - 125 - 150 - 200 mm



EXAMPLE E5 445122 A0 for heights: 75 - 100 - 125 - 150 - 200 mm

Partition example for steel drawer F 22 S5 445122:
 1 rubber "mat" S4/S5



EXAMPLE E5 445122 B0 for heights: 75 mm

EXAMPLE E5 445122 B1 for heights: 100 mm

EXAMPLE E5 445122 B2 for heights: 125 mm

EXAMPLE E5 445122 B3 for heights: 150 mm

EXAMPLE E5 445122 B4 for heights: 200 mm

Partition example for steel drawer F 22 S5 445122 with 3 compartments:
 2 "dividers" S4/S5
 1 rubber "mat" S4/S5



EXAMPLE E5 445122 C0 for heights: 75 mm

EXAMPLE E5 445122 C1 for heights: 100 mm

EXAMPLE E5 445122 C2 for heights: 125 mm

EXAMPLE E5 445122 C3 for heights: 150 mm

EXAMPLE E5 445122 C4 for heights: 200 mm

Partition example for steel drawer F 22 S5 445122 with 4 compartments:
 3 "dividers" S4/S5
 1 rubber "mat" S4/S5



EXAMPLE E5 445122 D0 for heights: 100 mm

Partition example for steel drawer F 22 S5 445122 with 44 compartments:
 1 "red" inset box
 13 "yellow" inset boxes
 30 "blue" inset boxes



EXAMPLE E5 445122 E0 for heights: 100 mm

Partition example for steel drawer F 22 S5 445122 with 59 compartments:
 1 "red" inset box
 43 "yellow" inset boxes
 15 "blue" inset boxes



EXAMPLE E5 445122 F0 for heights: 100 mm

Partition example for steel drawer F 22 S5 445122 with 34 compartments:
 1 "red" inset box
 13 "yellow" inset boxes
 20 "green" inset boxes



EXAMPLE E5 445122 G0 for heights: 100 mm

Partition example for steel drawer F 22 S5 445122 with 34 compartments:
 1 "red" inset box 12 "green" inset boxes
 5 "yellow" inset boxes
 16 "blue" inset boxes



EXAMPLE E5 445122 H0 for heights: 100 mm

Partition example for steel drawer F 22 S5 445122 with 34 compartments:
 1 "red" inset box 8 "green" inset boxes
 13 "yellow" inset boxes 3 "forest" inset boxes
 9 "blue" inset boxes



EXAMPLE E5 445122 L0 for heights: 100 mm

Partition example for steel drawer F 22 S5 445122 with 46 compartments:
 1 "red" inset box 8 "green" inset boxes
 25 "yellow" inset boxes
 12 "blue" inset boxes



EXAMPLE E5 445122 M0 for heights: 100 mm

Partition example for steel drawer F 22 S5 445122 with 54 compartments:
 9 "red" inset boxes 6 "green" inset boxes
 27 "yellow" inset boxes
 12 "blue" inset boxes



EXAMPLE E5 445122 N0 for heights: 100 mm

Partition example for steel drawer F 22 S5 445122 with 29 compartments:
 8 "red" inset boxes 2 "dividers" S4/S5
 10 "yellow" inset boxes 1 rubber "mat" S4/S5
 6 "blue" inset boxes 2 "adapters" S5
 3 "green" inset boxes



EXAMPLE E5 445122 P0 for heights: 100 mm

Partition example for steel drawer F 22 S5 445122 with 30 compartments:
 14 "yellow" inset boxes 1 "divider" S4/S5
 10 "blue" inset boxes 1 rubber "mat" S4/S5
 5 "green" inset boxes 2 "adapters" S5



DIVIDERS

E8 091 042

Dividers for drawers series S8 suitable for modules with width 423 mm and depth 916 mm
 Drawer load capacity: 80 Kg
 Available heights: 100 - 200 mm



EXAMPLE E8 091042 A0 for heights: 100 - 200 mm

Partition example for steel drawer F 22 S8 091042:
 1 rubber "mat" S4/S5



EXAMPLE E8 091042 B1 for heights: 100 mm

EXAMPLE E8 091042 B4 for heights: 200 mm

Partition example for steel drawer F 22 S8 091042 with 3 compartments:
 2 "dividers" S8
 1 rubber "mat" S4/S5



EXAMPLE E8 091042 C1 for heights: 100 mm

EXAMPLE E8 091042 C4 for heights: 200 mm

Partition example for steel drawer F 22 S8 091042 with 4 compartments:
 3 "dividers" S8
 1 rubber "mat" S4/S5



EXAMPLE E8 091042 D0 for heights: 100 mm

Partition example for steel drawer F 22 S8 091042 with 24 compartments:
 24 "blue" inset boxes



EXAMPLE E8 091042 E0 for heights: 100 mm

Partition example for steel drawer F 22 S8 091042 with 36 compartments:
 24 "yellow" inset boxes
 12 "blue" inset boxes



EXAMPLE E8 091042 F0 for heights: 100 mm

Partition example for steel drawer F 22 S8 091042 with 16 compartments:
 16 "green" inset boxes



EXAMPLE E8 091042 G0 for heights: 100 mm

Partition example for steel drawer F 22 S8 091042 with 20 compartments:
12 "blue" inset boxes
8 "green" inset boxes



EXAMPLE E8 091042 H0 for heights: 100 mm

Partition example for steel drawer F 22 S8 091042 with 15 compartments:
6 "blue" inset boxes
6 "green" inset boxes
3 "forest" inset boxes



EXAMPLE E8 091042 L0 for heights: 100 mm

Partition example for steel drawer F 22 S8 091042 with 29 compartments:
15 "yellow" inset boxes
9 "blue" inset boxes
5 "green" inset boxes



EXAMPLE E8 091042 M0 for heights: 100 mm

Partition example for steel drawer F 22 S8 091042 with 34 compartments:
8 "red" inset boxes
14 "yellow" inset boxes
6 "green" inset boxes
6 "blue" inset boxes



EXAMPLE E8 091042 N0 for heights: 100 mm

Partition example for steel drawer F 22 S8 091042 with 20 compartments:
6 "red" inset boxes
6 "yellow" inset boxes
3 "blue" inset boxes
3 "green" inset boxes
2 "dividers" S8
1 rubber "mat" S4/S5



EXAMPLE E8 091042 P0 for heights: 100 mm

Partition example for steel drawer F 22 S8 091042 with 17 compartments:
6 "yellow" inset boxes
6 "blue" inset boxes
4 "green" inset boxes
1 "divider" S8
1 rubber "mat" S4/S5



DIVIDERS

E8 091 058

Dividers for drawers series S8 suitable for modules with width 580 mm and depth 916 mm
 Drawer load capacity: 80 Kg
 Available heights: 100 - 200 mm



EXAMPLE E8 091058 A0 for heights: 100 - 200 mm

Partition example for steel drawer F 22 S8 091058:
 1 rubber "mat" S8



EXAMPLE E8 091058 B1 for heights: 100 mm

EXAMPLE E8 091058 B4 for heights: 200 mm

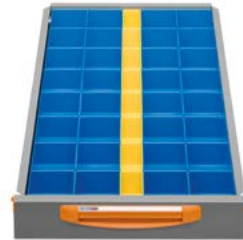
Partition example for steel drawer F 22 S8 091058 with 3 compartments:
 2 "dividers" S8
 1 rubber "mat" S8



EXAMPLE E8 091058 C1 for heights: 100 mm

EXAMPLE E8 091058 C4 for heights: 200 mm

Partition example for steel drawer F 22 S8 091058 with 4 compartments:
 3 "dividers" S8
 1 rubber "mat" S8



EXAMPLE E8 091058 D0 for heights: 100 mm

Partition example for steel drawer F 22 S8 091058 with 40 compartments:
 8 "yellow" inset boxes
 32 "blue" inset boxes



EXAMPLE E8 091058 E0 for heights: 100 mm

Partition example for steel drawer F 22 S8 091058 with 52 compartments:
 32 "yellow" inset boxes
 20 "blue" inset boxes



EXAMPLE E8 091058 F0 for heights: 100 mm

Partition example for steel drawer F 22 S8 091058 with 24 compartments:
 24 "green" inset boxes



EXAMPLE E8 091058 G0 for heights: 100 mm

Partition example for steel drawer F 22 S8 091058 with 32 compartments:

- 4 "yellow" inset boxes
- 16 "blue" inset boxes
- 12 "green" inset boxes



EXAMPLE E8 091058 H0 for heights: 100 mm

Partition example for steel drawer F 22 S8 091058 with 28 compartments:

- 6 "yellow" inset boxes
- 12 "blue" inset boxes
- 6 "green" inset boxes
- 4 "forest" inset boxes



EXAMPLE E8 091058 L0 for heights: 100 mm

Partition example for steel drawer F 22 S8 091058 with 42 compartments:

- 21 "yellow" inset boxes
- 12 "blue" inset boxes
- 9 "green" inset boxes



EXAMPLE E8 091058 M0 for heights: 100 mm

Partition example for steel drawer F 22 S8 091058 with 49 compartments:

- 10 "red" inset boxes
- 17 "yellow" inset boxes
- 16 "blue" inset boxes
- 6 "green" inset boxes



EXAMPLE E8 091058 N0 for heights: 100 mm

Partition example for steel drawer F 22 S8 091058 with 27 compartments:

- 6 "red" inset boxes
- 9 "yellow" inset boxes
- 6 "blue" inset boxes
- 4 "green" inset boxes
- 2 "dividers" S8
- 1 rubber "mat" S8



EXAMPLE E8 091058 P0 for heights: 100 mm

Partition example for steel drawer F 22 S8 091058 with 26 compartments:

- 11 "yellow" inset boxes
- 8 "blue" inset boxes
- 6 "green" inset boxes
- 1 "divider" S8
- 1 rubber "mat" S8



DIVIDERS

E8 093 042

Dividers for drawers series S8 suitable for modules with width 423 mm and depth 930 mm
 Drawer load capacity: 80 Kg
 Available heights: 100 - 200 mm



EXAMPLE E8 093042 A0 for heights: 100 - 200 mm

Partition example for steel drawer F 22 S8 093042:
 1 rubber "mat" S4/S5



EXAMPLE E8 093042 B1 for heights: 100 mm

EXAMPLE E8 093042 B4 for heights: 200 mm

Partition example for steel drawer F 22 S8 093042 with 3 compartments:
 2 "dividers" S8
 1 rubber "mat" S4/S5



EXAMPLE E8 093042 C1 for heights: 100 mm

EXAMPLE E8 093042 C4 for heights: 200 mm

Partition example for steel drawer F 22 S8 093042 with 4 compartments:
 3 "dividers" S8
 1 rubber "mat" S4/S5



EXAMPLE E8 093042 D0 for heights: 100 mm

Partition example for steel drawer F 22 S8 093042 with 27 compartments:
 3 "yellow" inset boxes
 24 "blue" inset boxes



EXAMPLE E8 093042 E0 for heights: 100 mm

Partition example for steel drawer F 22 S8 093042 with 39 compartments:
 27 "yellow" inset boxes
 12 "blue" inset boxes



EXAMPLE E8 093042 F0 for heights: 100 mm

Partition example for steel drawer F 22 S8 093042 with 17 compartments:
 17 "green" inset boxes



EXAMPLE E8 093042 G0 for heights: 100 mm

Partition example for steel drawer F 22 S8 093042 with 21 compartments:
12 "blue" inset boxes
9 "green" inset boxes



EXAMPLE E8 093042 H0 for heights: 100 mm

Partition example for steel drawer F 22 S8 093042 with 17 compartments:
9 "blue" inset boxes
5 "green" inset boxes
3 "forest" inset boxes



EXAMPLE E8 093042 L0 for heights: 100 mm

Partition example for steel drawer F 22 S8 093042 with 29 compartments:
12 "yellow" inset boxes
12 "blue" inset boxes
5 "green" inset boxes



EXAMPLE E8 093042 M0 for heights: 100 mm

Partition example for steel drawer F 22 S8 093042 with 36 compartments:
8 "red" inset boxes
14 "yellow" inset boxes
9 "blue" inset boxes
5 "green" inset boxes



EXAMPLE E8 093042 N0 for heights: 100 mm

Partition example for steel drawer F 22 S8 093042 with 20 compartments:
6 "red" inset boxes
3 "green" inset boxes
6 "yellow" inset boxes
2 "dividers" S8
3 "blue" inset boxes
1 rubber "mat" S4/S5



EXAMPLE E8 093042 P0 for heights: 100 mm

Partition example for steel drawer F 22 S8 093042 with 17 compartments:
6 "yellow" inset boxes
6 "blue" inset boxes
4 "green" inset boxes
1 "divider" S8
1 rubber "mat" S4/S5



DIVIDERS

E8 093 058

Dividers for drawers series S8 suitable for modules with width 580 mm and depth 930 mm
 Drawer load capacity: 80 Kg
 Available heights: 100 - 200 mm



EXAMPLE E8 093058 A0 for heights: 100 - 200 mm

Partition example for steel drawer F 22 S8 093058:
 1 rubber "mat" S8



EXAMPLE E8 093058 B1 for heights: 100 mm

EXAMPLE E8 093058 B4 for heights: 200 mm

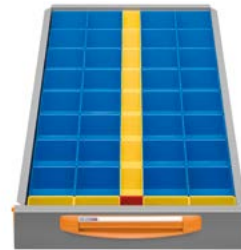
Partition example for steel drawer F 22 S8 093058 with 3 compartments:
 2 "dividers" S8
 1 rubber "mat" S8



EXAMPLE E8 093058 C1 for heights: 100 mm

EXAMPLE E8 093058 C4 for heights: 200 mm

Partition example for steel drawer F 22 S8 093058 with 4 compartments:
 3 "dividers" S8
 1 rubber "mat" S8



EXAMPLE E8 093058 D0 for heights: 100 mm

Partition example for steel drawer F 22 S8 093058 with 45 compartments:
 1 "red" inset box
 12 "yellow" inset boxes
 32 "blue" inset boxes



EXAMPLE E8 093058 E0 for heights: 100 mm

Partition example for steel drawer F 22 S8 093058 with 57 compartments:
 1 "red" inset box
 36 "yellow" inset boxes
 20 "blue" inset boxes



EXAMPLE E8 093058 F0 for heights: 100 mm

Partition example for steel drawer F 22 S8 093058 with 29 compartments:
 1 "red" inset box
 4 "yellow" inset boxes
 24 "green" inset boxes



EXAMPLE E8 093058 G0 for heights: 100 mm

Partition example for steel drawer F 22 S8 093058 with 35 compartments:
 1 "red" inset box 13 "green" inset boxes
 5 "yellow" inset boxes
 16 "blue" inset boxes



EXAMPLE E8 093058 H0 for heights: 100 mm

Partition example for steel drawer F 22 S8 093058 with 31 compartments:
 1 "red" inset box 7 "green" inset boxes
 7 "yellow" inset boxes 4 "forest" inset boxes
 12 "blue" inset boxes



EXAMPLE E8 093058 L0 for heights: 100 mm

Partition example for steel drawer F 22 S8 093058 with 45 compartments:
 1 "red" inset box 10 "green" inset boxes
 22 "yellow" inset boxes
 12 "blue" inset boxes



EXAMPLE E8 093058 M0 for heights: 100 mm

Partition example for steel drawer F 22 S8 093058 with 50 compartments:
 7 "red" inset boxes 7 "green" inset boxes
 20 "yellow" inset boxes
 16 "blue" inset boxes



EXAMPLE E8 093058 N0 for heights: 100 mm

Partition example for steel drawer F 22 S8 093058 with 27 compartments:
 6 "red" inset boxes 4 "green" inset boxes
 9 "yellow" inset boxes 2 "dividers" S8
 6 "blue" inset boxes 1 rubber "mat" S8



EXAMPLE E8 093058 P0 for heights: 100 mm

Partition example for steel drawer F 22 S8 093058 with 26 compartments:
 11 "yellow" inset boxes 1 "divider" S8
 8 "blue" inset boxes 1 rubber "mat" S8
 6 "green" inset boxes



DIVIDERS E8 108 042

Dividers for drawers series S8 suitable for modules with width 423 mm and depth 1086 mm
Drawer load capacity: 80 Kg
Available heights: 200 mm



EXAMPLE E8 108042 A0 for heights: 200 mm

Partition example for steel drawer F 22 S8 108042:
1 rubber "mat" S4/S5



EXAMPLE E8 108042 B4 for heights: 200 mm

Partition example for steel drawer F 22 S8 108042 with 3 compartments:
2 "dividers" S8
1 rubber "mat" S4/S5



EXAMPLE E8 108042 C4 for heights: 200 mm

Partition example for steel drawer F 22 S8 108042 with 4 compartments:
3 "dividers" S8
1 rubber "mat" S4/S5





DIVIDERS E8 108 058

Dividers for drawers series S8 suitable for modules with width 580 mm and depth 1086 mm
 Drawer load capacity: 80 Kg
 Available heights: 200 mm



EXAMPLE E8 108058 A0 for heights: 200 mm

Partition example for steel drawer F 22 S8 108058:
 1 rubber "mat" S8



EXAMPLE E8 108058 B4 for heights: 200 mm

Partition example for steel drawer F 22 S8 108058 with 3 compartments:
 2 "dividers" S8
 1 rubber "mat" S8



EXAMPLE E8 108058 C4 for heights: 200 mm

Partition example for steel drawer F 22 S8 108058 with 4 compartments:
 3 "dividers" S8
 1 rubber "mat" S8





WWW.STOREVAN.COM



FAMI S.r.l.

Via Stazione Rossano, 13 | 36027 Rosà (VI) | ITALY
phone +39 0424 585455 | fax +39 0424 585482
www.famisp.com | info@famisp.com
www.storevan.com | info@storevan.com